

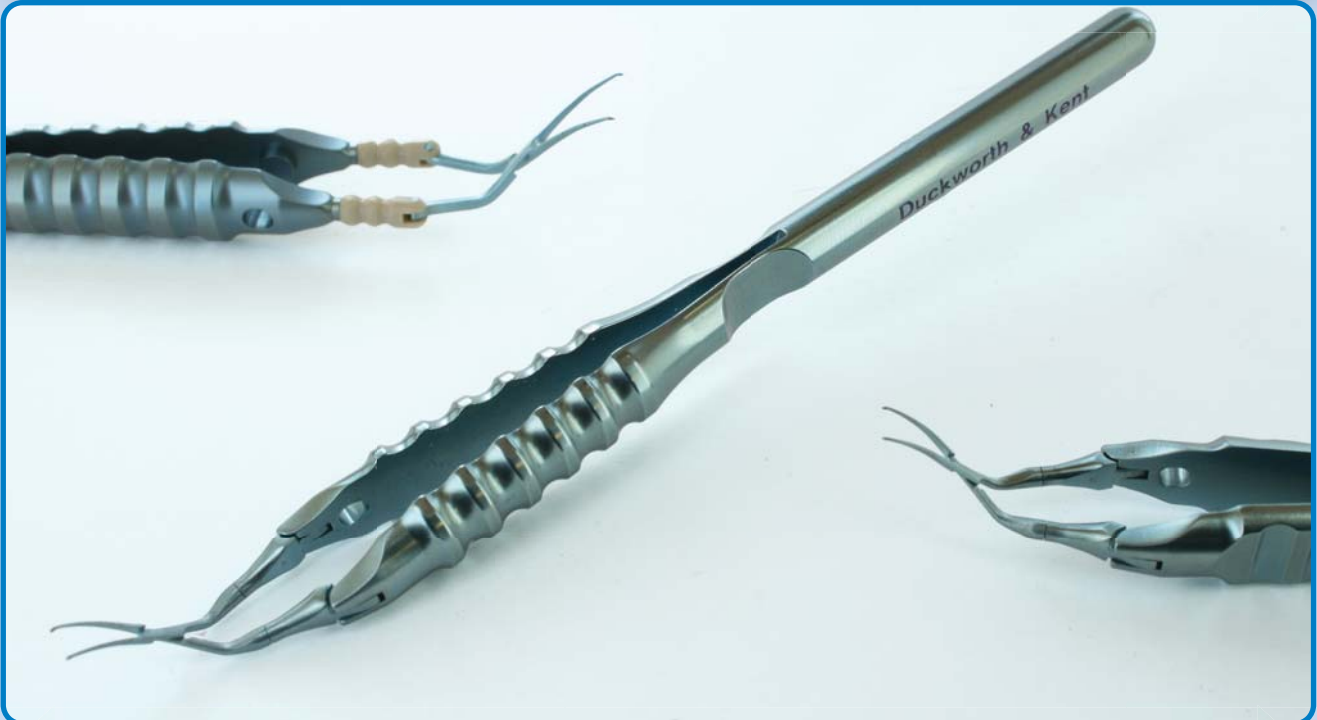


**Duckworth & Kent**  
titanium surgical instruments

Established in 1959

# Capsulorhexis Forceps

World reputation for excellence



The finest Capsulorhexis Instruments

Incision Sizes

3.0mm

1.8mm

1.5mm

1.0mm

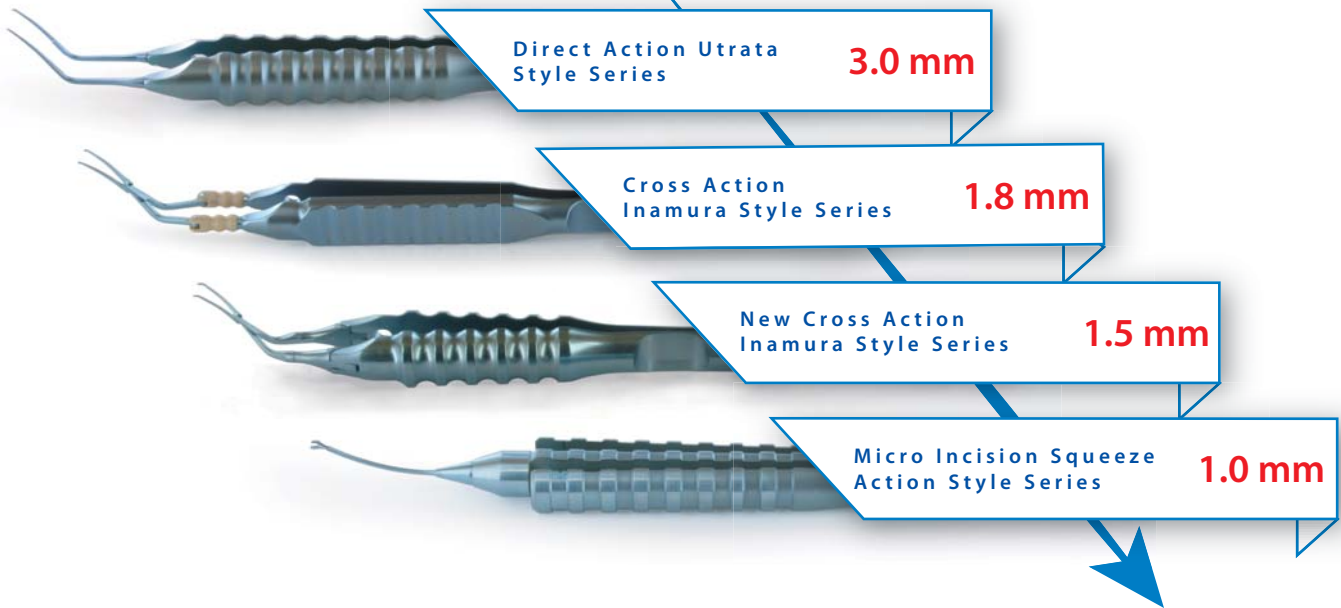
[www.duckworth-and-kent.com](http://www.duckworth-and-kent.com)

7 Marquis Business Centre  
Royston Road, Baldock  
Herts SG7 6XL England

Tel: +44 (0)1462 893254  
Fax: +44 (0)1462 896288  
Email: [info@duckworth-and-kent.com](mailto:info@duckworth-and-kent.com)

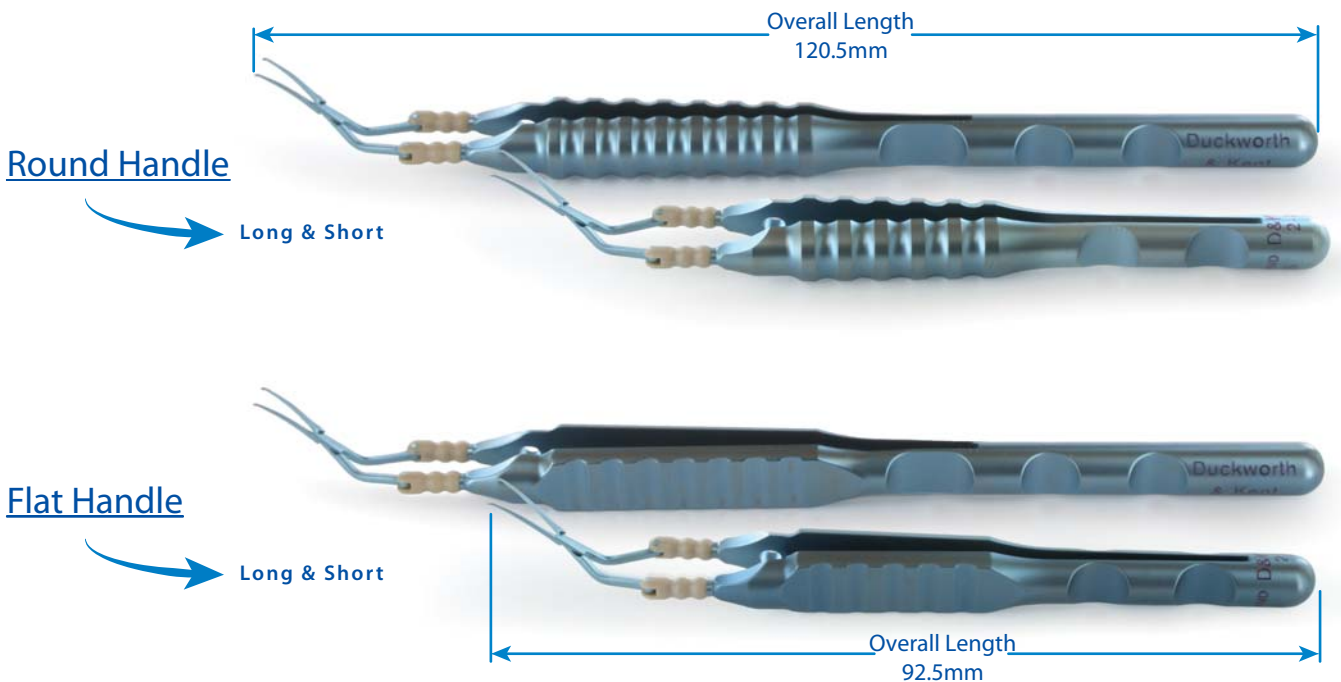
*at the Leading Edge*

## Which incision size suits you ?



The ergonomic shape and elegant design combine with a well balanced quality instrument that is comfortable and feels natural in your hand. The design incorporates either a flat or round handle grip, each having their own unique advantages. The round handle allows the surgeon to roll or rotate the instruments, whereas the flat handle gives tip orientation. Two overall lengths are offered for both styles of handles, 120.5mm or a shorter 92.5mm which is identified by the prefix 'S' at the end of the product code.

## Which handle suits you ?



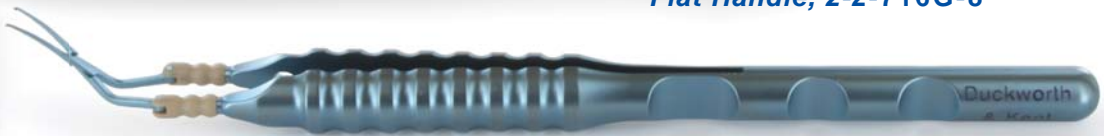
Incision Down To  
**1.8mm**

# Inamura Capsulorhexis Forceps

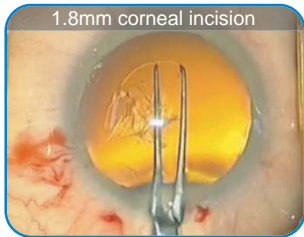


Flat Handle, 2-2-716G-8

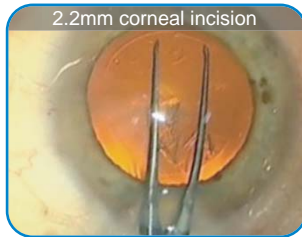
**RECOMMENDED INSTRUMENT**



Round Handle, 2-2-716G-8R



1.8mm corneal incision

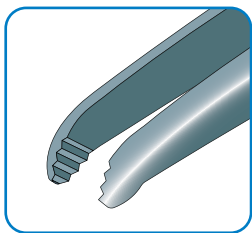


2.2mm corneal incision

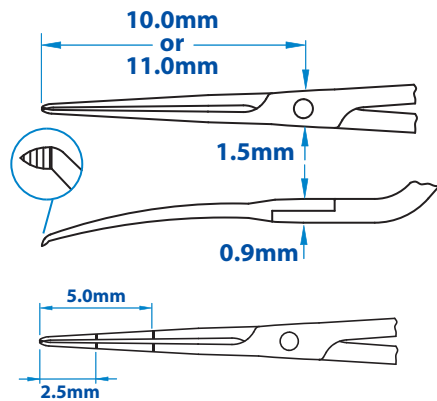
## Operates through 1.8mm incision

Dr O. Malauzat from Bordeaux France has carried out an independent review of the Duckworth and Kent Inamura Capsulorhexis Forceps reference 2-2-716G-7R. Dr Malauzat evaluated the forceps through four different clear corneal incision sizes: 2.2mm, 1.8mm, 1.7mm and a tapered 1.5 to 1.7mm incision. The video created by Dr Malauzat of his evaluation of the forceps can be found on our website:

[www.duckworth-and-kent.com/videos](http://www.duckworth-and-kent.com/videos)



**POINTED SERRATED TIPS**  
Precise interlocking serrated tips with a sharp point enable the surgeon to initiate the capsule tear then securely grasp the capsule to perform the capsulorhexis.



**CORNEAL INCISION or SCLERAL TUNNEL**  
Tip to pivot length either 10.0mm or 11.0mm. Designed specifically for cornea or scleral placed incisions.

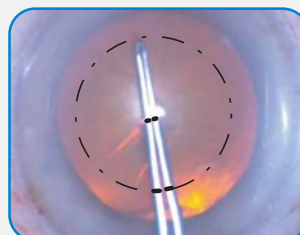
**SMALL INCISION SIZE**  
Designed to fit comfortably through any incision down to **1.8mm**.



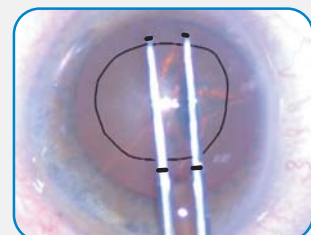
**ENGRAVED SCALE**  
Marks on the shaft at 2.5mm and 5.0mm from tip.

**SMOOTH ACTION**  
Three pivot point precision provides the highest quality with a smooth controlled action.

Consistent capsulorhexis size is crucial for optimal IOL function. Utilising the smooth action of the Inamura cross action capsulorhexis forceps, the new Inamura Capsulorhexis Forceps incorporate a visible scale engraved at the functional end of the tips that denotes the desired diameter and radius of the capsulorhexis. The surgeon can repeatedly measure the size of the capsulorhexis using the forceps within the anterior chamber. It has been found that measuring on the cornea surface overestimates the actual size of the capsulorhexis when measured within the anterior chamber by up to 20%.



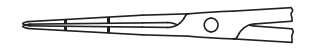
Scale at tips enables the surgeon to visualise the desired rhexis size just prior to and validate just after its creation.



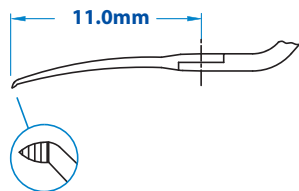
Measuring on the cornea surface can overestimate the actual size of the capsulorhexis by up to 20%

# Calladine-Inamura Capsulorhexis Forceps

## Scleral Tunnel



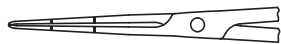
Suitable for Scleral Tunnel



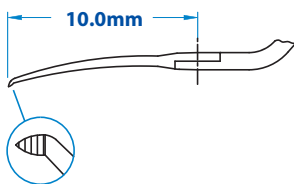
Engraved scale at 2.5mm and 5.0mm to assist in assessing the size of the capsulorhexis

For instruments without incorporated scale order :  
 2-2-716G-6R - Round Handle  
 2-2-716G-6RS - Short Round Handle  
 2-2-716G-6 - Flat Handle  
 2-2-716G-6S - Short Flat Handle

## Corneal Incision



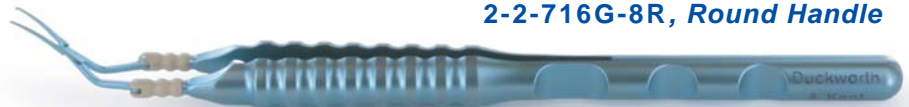
Suitable for Corneal Incision



Engraved scale at 2.5mm and 5.0mm to assist in assessing the size of the capsulorhexis

For instruments without incorporated scale order :  
 2-2-716G-7R - Round Handle  
 2-2-716G-7RS - Short Round Handle  
 2-2-716G-7 - Flat Handle  
 2-2-716G-7S - Short Flat Handle

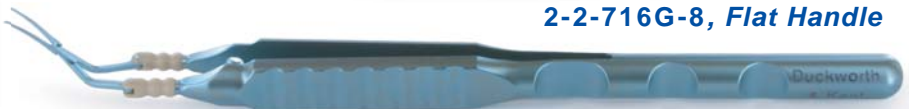
2-2-716G-8R, Round Handle



2-2-716G-8RS, Short Round Handle



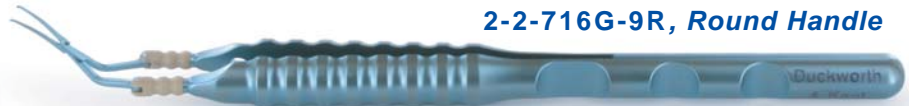
2-2-716G-8, Flat Handle



2-2-716G-8S, Short Flat Handle



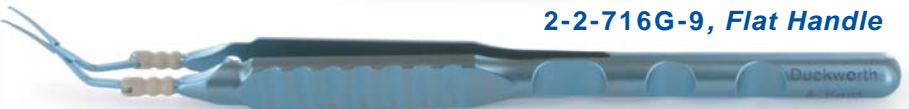
2-2-716G-9R, Round Handle



2-2-716G-9RS, Short Round Handle



2-2-716G-9, Flat Handle

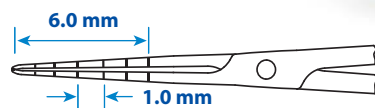


2-2-716G-9S, Short Flat Handle

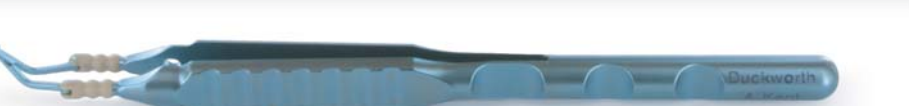


# New Jones - Inamura Flat Handle Capsulorhexis Forceps

ENGRAVED SCALE  
 at 1mm intervals from tip,  
 up to 6.0mm

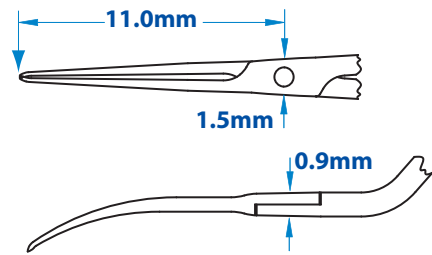
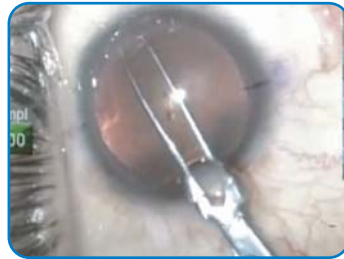


2-2-716G-10, Flat Handle



Accurate capsulorhexis size is crucial for optimal IOL function. Dr Jones has utilised the Inamura cross action capsulorhexis forceps by adding an engraved scale from the tip to 6.0mm along the shaft. The scale is in 1.0mm increments and enables the surgeon to repeatedly measure the size of the capsulorhexis using the forceps within the anterior chamber. Measuring on the cornea surface overestimates the actual size of the capsulorhexis when measured within the anterior chamber.

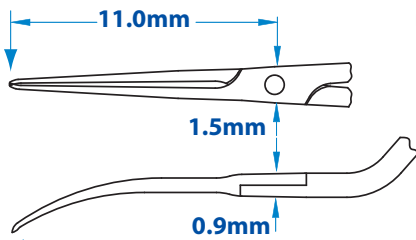
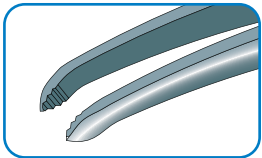
# Mackool - Inamura Capsulorhexis Forceps



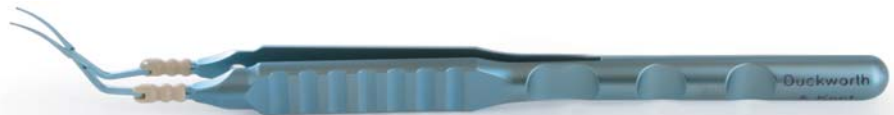
## Increased curvature of forceps shafts prevent corneal deformation

When entering through a corneal incision the increased curvature of forceps shafts prevent corneal deformation during use. The forceps are available with either sharp pointed tips or smooth blunt tips, both have serrated interlocking platforms.

## Pointed Tips



Pointed tips puncture the anterior capsule in initiating the tear



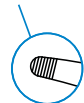
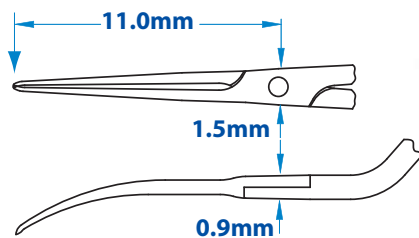
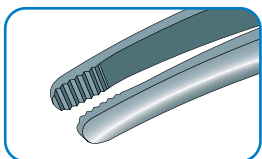
2-2-706G-1, Flat Handle



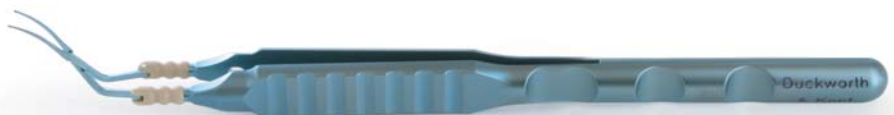
2-2-706GR-1, Round Handle

## Blunt Tips

Smooth blunt tips ensure easy entry.



Smooth blunt tips ensure easy entry



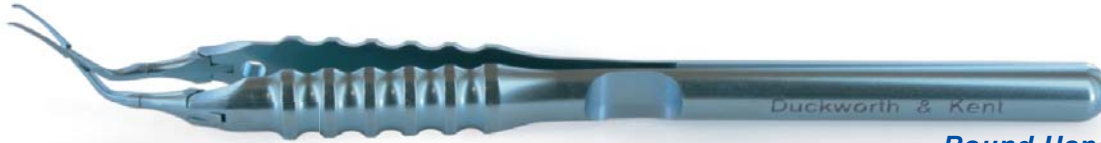
2-2-706G, Flat Handle



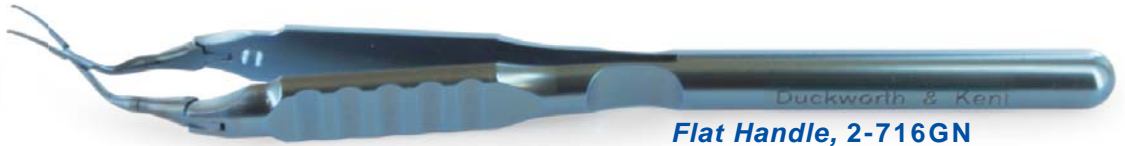
2-2-706GR, Round Handle

Incision Down To  
**1.5mm**

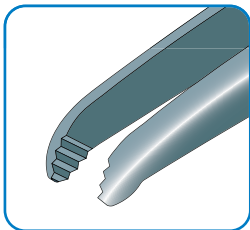
# New Inamura Capsulorhexis Forceps



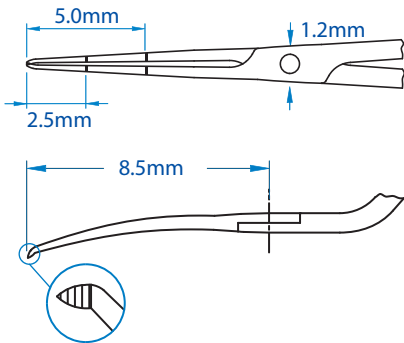
Round Handle, 2-716GNR8



Flat Handle, 2-716GN



**POINTED SERRATED TIPS**  
Precise interlocking serrated tips with a sharp point enable the surgeon to initiate the capsule tear then securely grasp the capsule to perform the capsulorhexis.



**CORNEAL INCISION**  
Tip to pivot length reduced to 8.5mm. Designed specifically for corneal placed incisions to ensure pivot stays within the incision.

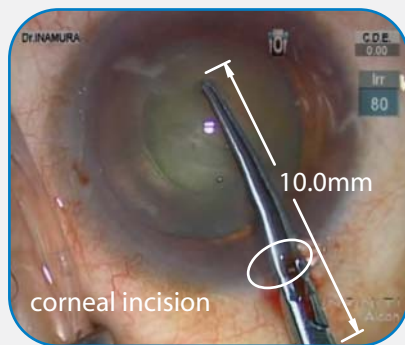
**MICRO INCISION PIVOT POINT**  
Designed to fit comfortably through any incision down to 1.5mm. Reduction of 50% in area at pivot point compared to the current 2-716.

**ENGRAVED SCALE**  
Marks on the shaft at 2.5mm and 5.0mm from tip.

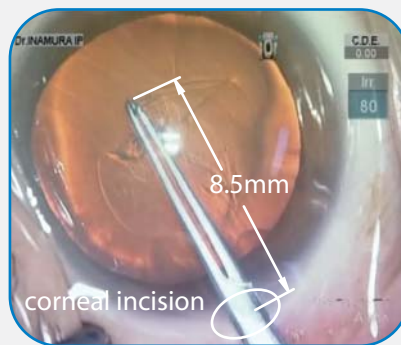
**SMOOTH ACTION**  
Titanium instrumentation with three pivot point precision provides the highest quality with a smooth controlled action.

Consistent capsulorhexis size is crucial for optimal IOL function. Utilising the smooth action of the Inamura cross action capsulorhexis forceps, the new Inamura Capsulorhexis Forceps incorporate a visible scale engraved at the functional end of the tips that denotes the desired diameter and radius of the capsulorhexis. The surgeon can repeatedly measure the size of the capsulorhexis using the forceps within the anterior chamber. It has been found that measuring on the cornea surface overestimates the actual size of the capsulorhexis when measured within the anterior chamber by up to 20%.

Original Capsulorhexis Forceps

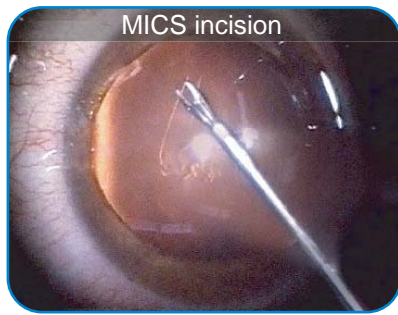


New Capsulorhexis Forceps



Keeping the pivot in the incision reduces the leakage from the anterior chamber. It also enables the tips to operate fully at the smaller incision sizes without stretching the incision and causing corneal deformation.

**Incision Down To  
1.0mm**



Squeeze action, working through small incision

**Micro Incision Capsulorhexis Forceps**

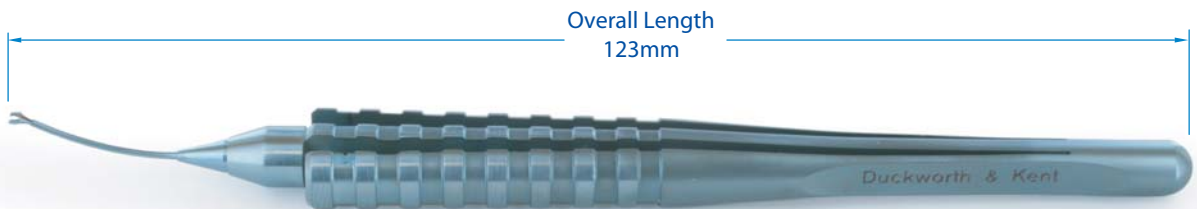
**POINTED TIPS**

Fine precise titanium tips with a sharp point enable the surgeon to initiate the capsule tear then securely grasp the capsule to perform the capsulorhexis.



**TITANIUM TUBE Ø0.7mm**  
Polished curved 22 gauge tube and front section made from single piece of titanium. No fabrication and joints to fail over time.

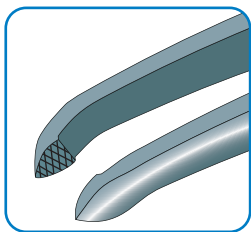
**TITANIUM HANDLE**  
Sleek, symmetrical lightweight handle for exceptional balance and control. Squeeze action mechanism works tips.



**2-847-4, DK Squeeze Handle Capsulorhexis Forceps**

**incision sizes greater than  
3.0mm**

**Direct Action Utrata Capsulorhexis Forceps**

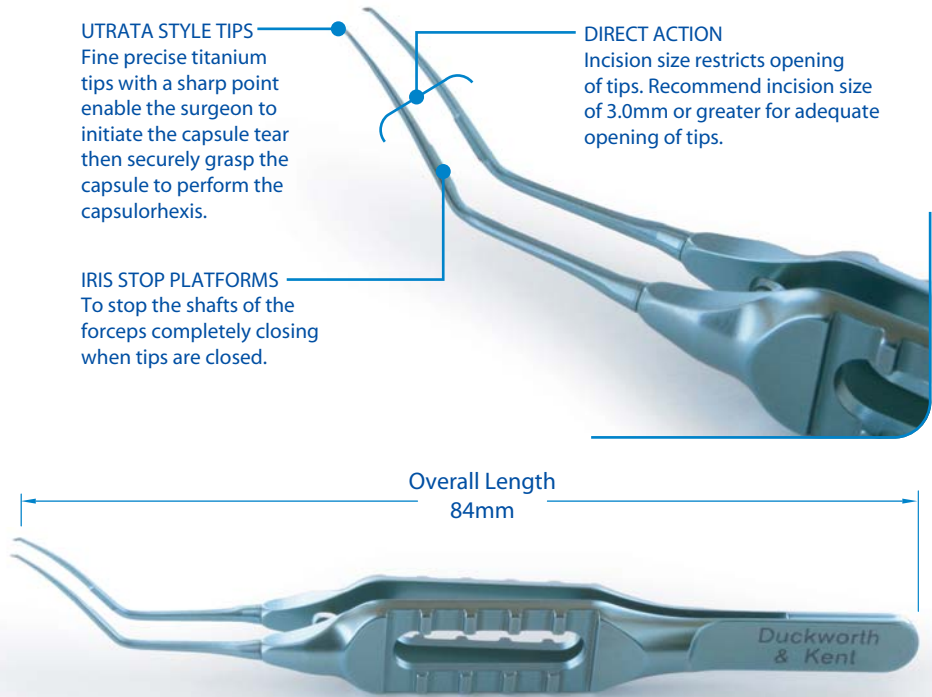
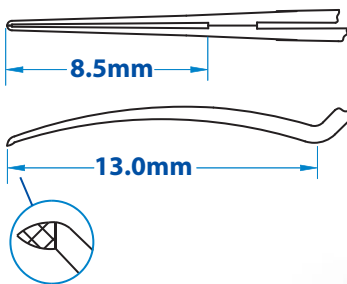


**UTRATA STYLE TIPS**  
Fine precise titanium tips with a sharp point enable the surgeon to initiate the capsule tear then securely grasp the capsule to perform the capsulorhexis.

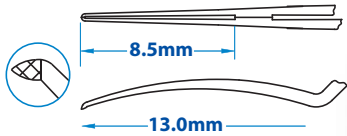
**DIRECT ACTION**  
Incision size restricts opening of tips. Recommend incision size of 3.0mm or greater for adequate opening of tips.

**IRIS STOP PLATFORMS**  
To stop the shafts of the forceps completely closing when tips are closed.

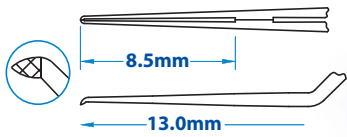
Overall Length  
84mm



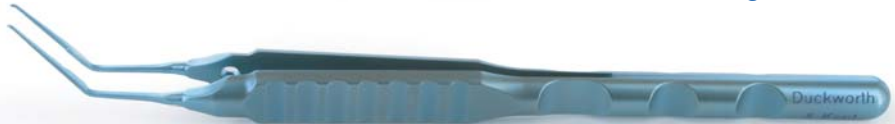
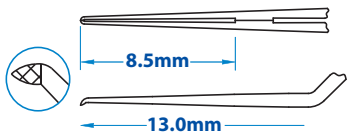
**2-718N, Short Flat Handle with Curved Shafts**



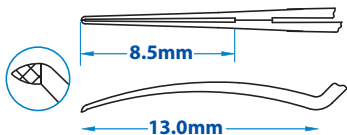
**2-2-718, Flat Handle with Curved Shafts  
Overall Length 118mm**



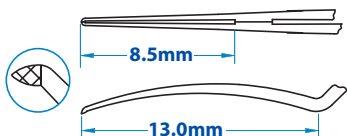
**2-719N, Short Flat Handle with Straight Shafts  
Overall Length 84mm**



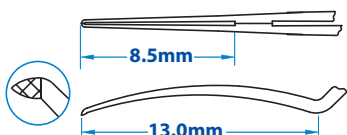
**2-2-719-1, Flat Handle with Straight Shafts  
Overall Length 118mm**



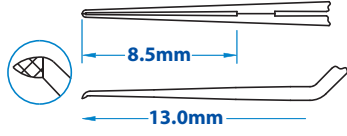
**2-2-712, Round Handle with Curved Shafts  
Overall Length 118mm**



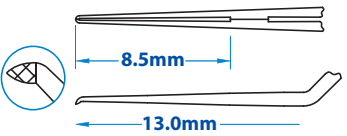
**2-712NR, Round Handle with Curved Shafts  
Overall Length 115mm**



**2-712NR8, 8mm Round Handle with Curved Shafts  
Overall Length 115mm**



**2-714NR, Round Handle with Straight Shafts  
Overall Length 115mm**



**2-714NR8, 8mm Round Handle with Straight Shafts  
Overall Length 115mm**

[www.duckworth-and-kent.com](http://www.duckworth-and-kent.com)

7 Marquis Business Centre  
Royston Road, Baldock  
Herts SG7 6XL England

Tel: +44 (0)1462 893254  
Fax: +44 (0)1462 896288  
Email: [info@duckworth-and-kent.com](mailto:info@duckworth-and-kent.com)



© March 2010 Duckworth & Kent  
Revised 18.11.2011

D&K® is a registered trademark. All other brand names are trademarks or registered trademarks of their respective owners. All schematic line drawings, photographs and copy in this leaflet are fully protected by copyright. No part of this leaflet may be reproduced in any form without prior written permission. We reserve the right to make changes at any time, without notice, in product specifications and availability. Descriptive, typographic, or photographic errors are subject to correction. Name(s) of instruments are often comprised of surgeon's name, combination of surgeons' names or by the category of the instrument.

*at the Leading Edge*